

**Liquor Store /Municipal Bldg./ License Committee  
Liquor Store/Municipal Building/License Meeting  
Vergas Liquor Store-111 Main St  
2:00 PM on Monday, April 14, 2025**

**1.Additions and Deletions**

**2.Municipal Building**

# Table of Contents

3. Municipal Building .....	3
-----------------------------	---

**Liquor Store /Municipal Bldg./ License Committee  
Liquor Store/Municipal Building/License Meeting  
Vergas Liquor Store-111 Main St  
2:00 PM on Monday, April 14, 2025**

**3. Municipal Building**

---

**Files Attached**

---

- For a handicap bathroom.pdf
- Drawing of sewer line.pdf
- Liquor Store Sonnenberg Bid.pdf

For a handicap bathroom, the minimum dimensions for a wheelchair-accessible stall are 60 inches wide and 56 inches deep, with a 32-inch wide door, and a 60-inch diameter turning space.

Here's a more detailed breakdown of ADA-compliant handicap bathroom dimensions:

General Space Requirements:

- **Minimum Room Size:** A minimum of 60 inches wide by 56 inches deep, plus clearance space for fixtures.
- **Turning Space:** A 60-inch diameter circular or a 60-inch T-shaped area is required for wheelchair maneuvering.
- **Door Clearance:** The clear width of a door opening must be a minimum of 32 inches.
- **Door Swing:** Doors should swing outwards or be equipped with a self-closing mechanism.
- **Clear Floor Space:** A clear floor space of 12 inches is required on the push side of the door, and 18 inches on the pull side for a front approach.

Toilet Compartment:

- **Width:** At least 60 inches.
- **Depth:** At least 56 inches for wall-hung toilets, or 59 inches for floor-mounted toilets.
- **Toilet Seat Height:** 17 inches to 19 inches from the floor.
- **Grab Bars:**
  - **Placement:** Located on the side wall (at least 54 inches long) and the rear wall (at least 42 inches long).
  - **Height:** Between 33-36 inches above the floor.
- **Clearance:** A minimum of 60 inches measured perpendicular from the sidewall and 56 inches measured perpendicular from the rear wall.

Sink:

- **Height:**

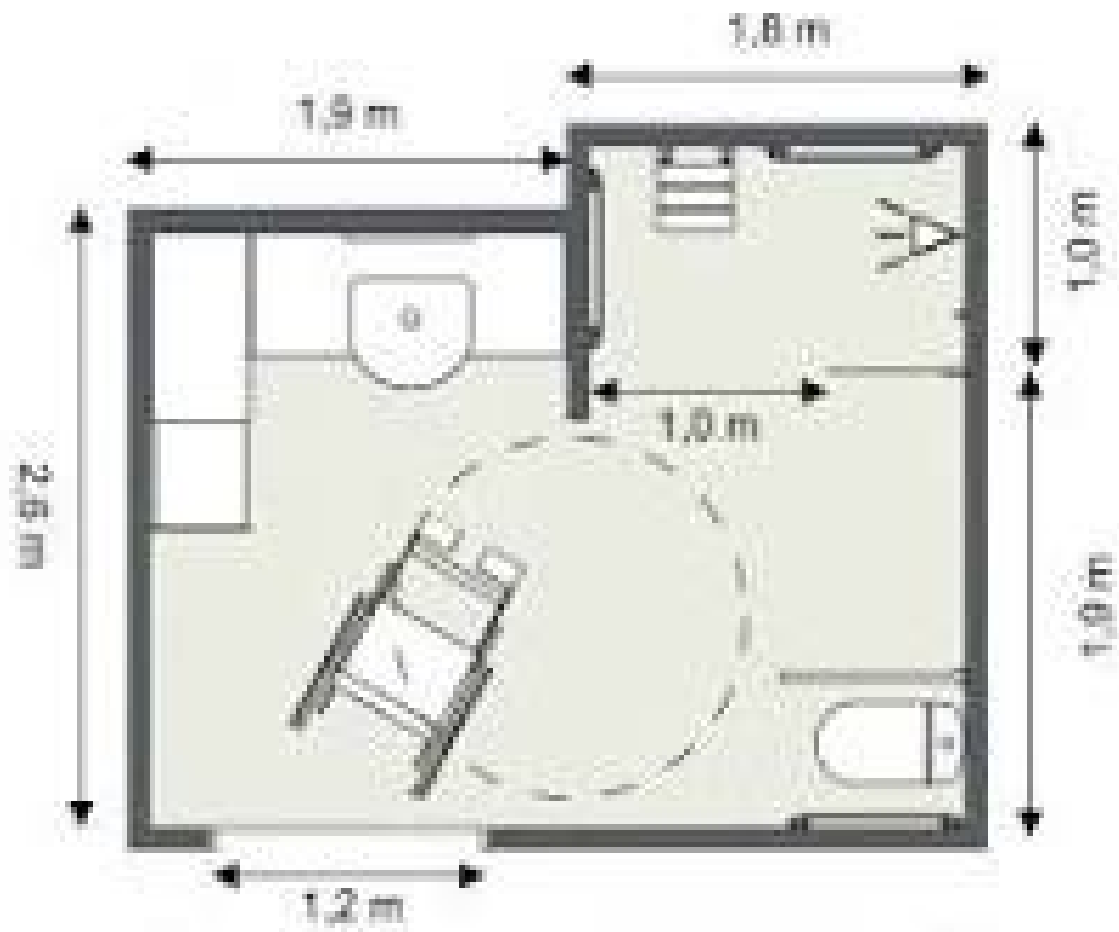
The sink should be mounted so that the bottom edge of the basin is no higher than 34 inches from the floor.
- **Clearance:**

There should be a clear area underneath the sink, free of obstructions, to allow for wheelchair access.

Important Considerations:

- **Compliance:**

These dimensions are based on the [Americans with Disabilities Act \(ADA\)](#) standards.





WIDSETH  
SMITH  
NOLTING

JOB \_\_\_\_\_

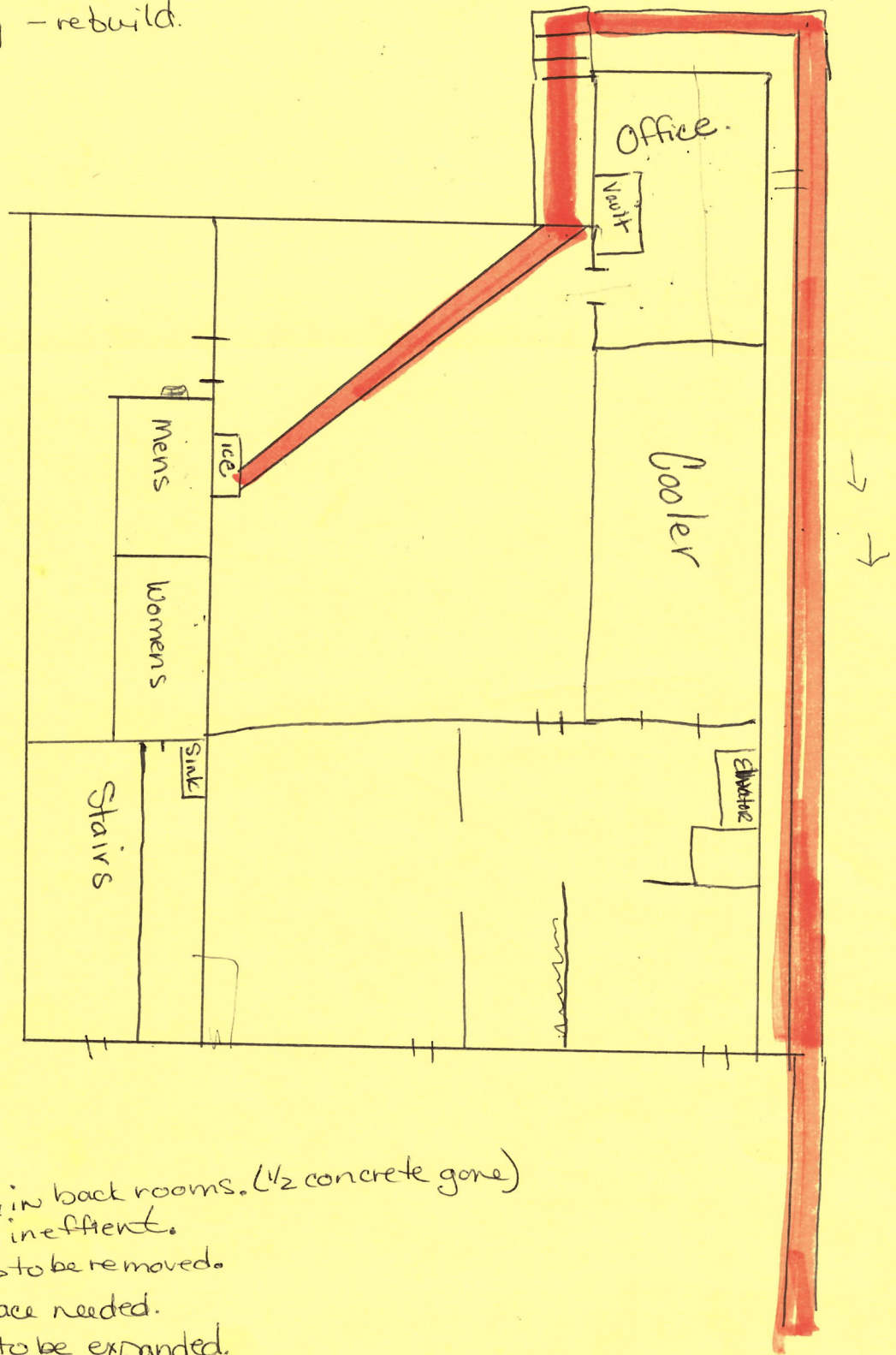
\_\_\_\_\_ JOB NO. \_\_\_\_\_

CALCULATED BY \_\_\_\_\_ DATE \_\_\_\_\_

CHECKED BY \_\_\_\_\_ DATE \_\_\_\_\_

Possible Solutions

- move bathrooms to Office Space
- tear down building - rebuild.
- sell and relocate



cement crumbling in back rooms. (1/2 concrete gone)  
Back room are inefficient.  
Elevator needs to be removed.  
More retail space needed.  
Cooler needs to be expanded.

Sonnenberg Excavating  
48990 COUNTY HIGHWAY 17 VERGAS, MN 56587  
218-342-2167

Date: 4/14/25

Bid is for: City of Vergas

Run line at the liquor store:

Option 1

- Hook on to existing pipe in parking lot and extend to the sw back part of the building approx. 75 ft .....\$4750  
\*price includes insulation and bedding sand  
and refilling trench with good material and  
hauling out dug out material  
\*Add on \$30/ft if you decide to go up the west side to your destination

Option2

- Hook on to sewer main and extend sewer to back of building in sw corner approx 70 ft.....\$7600  
\*price includes insulation and bedding sand  
And refilling trench with good material and  
hauling out dug material  
\*Add on \$30/ft if you decide to go up the west side to your destination

- ❖ Does not include any material other than material on site unless specified
- ❖ Does not include any needed permits

- **50% down payment required before work begins**
- **Remaining 50% due upon completion**
- **Anything extra will be at \$120/machine & \$60/man per hour**
- **Silt fence will be at additional charge of \$8/ft**

---

**Sonnenberg Excavating Contractor**

**Homeowner Signature**

