

**Street / Sidewalks/ Yard Waste Committee
Streets/Sidewalks/Yard Waste
Vergas Event Center
4:00 PM on Thursday, December 29, 2022**

1. **Call to Order**
2. **Agenda Additions or Deletions**
3. **Minutes**
4. **Snow Removal and Ice Control Policy**
5. **Parking**
6. **CHAH 4 and CSAH 60**

Table of Contents

3. Minutes	3
4. Snow Removal and Ice Control Policy	7
POLICY:	8
8. OTHER CONSIDERATIONS:	9
5. Parking	11
6. CHAH 4 and CSAH 60	14

**Street / Sidewalks/ Yard Waste Committee
Streets/Sidewalks/Yard Waste
Vergas Event Center
4:00 PM on Thursday, December 29, 2022**

3. Minutes

Files Attached

- 12.08.22SSYW.minpdf.pdf

Street/Sidewalks/Yard Waste Committee Meeting Minutes
Vergas City Office
December 8, 2022

1.) A meeting of the Vergas Streets/Sidewalks/Yard Waste (SSYW) Committee was held on Thursday, December 8, 2022 at 4:00 PM at the Vergas Event Center. Present was Bruce Albright and Paul Pinke, Vergas City Council; Mike DuFrane, Utility Superintendent; Julie Lammers, City Clerk, Blaine Green, Widseth via Zoom, and Cristi Field, OtterTail County Highway Department. Albright called the SSYW meeting to order at 4:07 PM.

2.) Agenda Additions or Deletions. Lammers wanted to add County Garage to the agenda.

3.) Minutes for the 10/25/22 SSYW meeting were attached in the agenda packet. Pinke said he read them, and made a motion to approve, seconded by Albright, approved.

6.) Snow Removal. The City has been working on a number of changes to the snow removal policies, ordinances, and rules. They will hopefully come to hearings early January, 2023. With the addition this summer of diagonal parking on the west side of South (S) 1ST Avenue (AVE)/ County Road (C.R.) Number (No.). 4, between West (W) Main Street (ST) and East (E) Linden ST, we now have created a snow removal issue. Field said the County's snowplows are 12' wide with an 8' wing. With the relocation of the County Garage from Vergas to Pelican Rapids, it is also going to now take longer to get the City of Vergas County roads plowed. Some type of resolution should be adopted for 1ST AVE S designated above, that includes signs saying "No Parking Nov. 1 to April 1 between the hours of 2:00 AM to 8:00 AM for snow removal". Two signs would be needed, one north and one south of the alley, Field said the signs could be placed on tall plastic traffic delineator posts, as it would be difficult to add steel posts through the concrete sidewalk at this time of the year. DuFrane thought he had a couple of the delineators. Another future option might look at removing the sidewalk on the west side of the AVE. This would give us more room to work with. Also by next year this time, we should have the new parking lot done where the County garage sets now. This should also help to alleviate some of the current parking problems. Albright asked if the County would help fund the sidewalk removal, Field said probably not. Lammers felt the necessary resolution could be handled at the upcoming 12/13/22 Council meeting.

4.) Signs. Field said that the County Sign people have been directed to change the sign on C.R. No. 60 near the intersection with C.R. No. 4 in the near future. The existing sign says "55 MPH", and the new sign will read "End 40 MPH". Hopefully this will help slow down the intersection traffic.

Regarding signs and road right-of-way (R/W), Field has checked the records for C.R. No. 4/ S 1ST AVE. She says they have 35' as measured from the road centerline, and the tractors are parked on the landowner's residential lot within the road R/W. The City contacted the owner of 170 S 1ST AVE, regarding Ordinance 71.08, Prohibiting Parking Areas in Front Yards In Residential Zones regarding the same issue. The homeowner said his property is zoned Commercial. Field said from a County perspective, she could get the tractors moved, as they are a road hazard. She will have a personal field meeting with the owner, before the County sends an official letter.

Regarding an additional sign for the Yard Waste site, Lammers will get pricing from JH Signs and Designs, Perham, MN. She will get two prices for a 4'x4' and a 4' x 8' sign. The sign will say "Yard Waste Permit Holders Only", "See Permit for Rules", "No Commercial Dumping",

“Permits can be Purchased at the City Office or Liquor Store”, and “Camera Surveillance in Use”. Lammers said for 2022, she’s issued 88 resident permits (no charge). For the nearby Townships, it is as follows: Dora - 74, Edna - 57, Hobart/Candor - 47, Lida - 14. Lammers questioned that if a resident leaves town, should they be required to turn in their dumping permit? The Committee talked about prosecuting violators. It could be up to a \$300 fine, with two or more infractions, they loose use of the privilege. DuFrane said we also have the issue of unintended fires. This has happened at least 3 times, and we get billed from the Fire Department. DuFrane has also talked with the Solid Waste Department in Fergus Falls, and would still like to see some more gravel added around the blue bins. Albright said we should calculate some quantities in the spring, and contact the County again.

Regarding the barricades placed on the trail wooden walkway bridge along Long Lake, Albright thought that the south barricade had to be placed closer to the bridge, as right now, a snowmobile can get around the barricade and onto the bridge. DuFrane said he could move it closer to the bridge.

5.) Sidewalk Policy. We talked earlier about the snow removal issues along S 1ST AVE. 71.04 Declaration of Snow Emergency; Parking Prohibited. Is an Ordinance that will come to the Council at their meeting on December 13th. Snow removal on streets and sidewalks gets addressed again in Chapter 93, Streets and Sidewalks. Last year, Albright said we contacted a number of neighboring towns regarding their snow removal policies, A revised Ordinance was drafted in this regard. The Committee felt they would like to see it again before passing it on the Council for them to schedule an Ordinance hearing.

7.) Lawrence Lake Acres. Lammers said the developer has agreed to extend Glenn ST to his subdivision property line, at his expense. Widseth has the “preliminary plans” for the improvement of W Lake ST. Green felt that his cost estimate numbers were pretty good, maybe except for R/W, which we now know on the east end of W Lake ST, we don’t have R/W. Green plans to attend the next Council meeting, where he can present the “preliminary study”.

Regarding the Pavement Management Study, Green said he also plans to present that study at the next Council meeting, and wanted to attend in person for said presentation. Once filed, it will be “public information”.

8.) County Garage Parking. Widseth has presented two options for potential parking, once the building is demolished. Option 1A, is for perpendicular parking on the west side, with two-way traffic, and for a possible 6 parking spots on the east side (parallel parking). Someone thought these could be used for vehicles with trailers in the summer. If the parallel parking is utilized, then the traffic would be one-way (alley to E Linden ST). This is Option 1B. Option 2 is for diagonal parking on both sides, again with one-way traffic, yielding 18-20 stalls. Lammers thought we’ll probably need a fence on the west side of property. Signage for the parking lot could include “No Vehicles Over 24 Hours”. We already know that the Altona Square people would like to rent 7 of the spots for their apartment tenants. The will pay \$10/month for each spot, said fee will be added to their rent.

9.) Adjournment. Albright adjourned the meeting at 5:54 PM.

Respectfully prepared and submitted by;

Bruce E. Albright, City Council Member

Council Recommendations:

- “No Parking” signs for snow removal along S 1ST AVE, between Main and Linden ST.

Follow up Actions:

- Feasibility reports for W Lake Streets.
- Address R/W needs for W Lake ST improvement project.
- Continue to work on R/W needs for East Lake Street and N Railway AVE.
- SSW Committee to continue to work on budgets, and future road funding needs.
- Continue to work on City parking, issue engineer work orders to analyze parking potential behind the Event Center, along S 2ND AVE, S Railway AVE (assuming Railroad approval), and behind City Offices including County shop. Work on handicap parking spots.
- Assess needs/budget for Small Cities Assistance Program funding. Lobby legislators for future funding, explain our needs to Legislators.
- Evaluate County and MnDOT speed study data regarding public safety concerns along trail. Look at creating an “urban” district.
- Continue to work on snow removal, sidewalk, and parking ordinances/policies to address concerns. Snow emergency routes?
- Look at making W Sunset Strip an official street.
- Cost estimate for N Railway AVE repairs north of Elm ST intersection.
- Start “budgeting” for Street Condition Survey work.

Additional Future Meeting Agenda Items:

- none.

**Street / Sidewalks/ Yard Waste Committee
Streets/Sidewalks/Yard Waste
Vergas Event Center
4:00 PM on Thursday, December 29, 2022**

4. Snow Removal and Ice Control Policy

Files Attached

- Proposed snow-plowing-policy-.pdf
- Proposed Ordinance 71.04 Declaring snow Emergency, parking requirments.pdf

City of Vergas
Snow Removal and Ice Control Policy

INTRODUCTION: The City will provide snow removal and ice control operations in a safe and cost-effective manner; keeping in mind safety, budget and environmental factors. The city will utilize its employee's and equipment and/or private contractors, when necessary, to provide this service.

POLICY:

1. The City Utilities Department decides when to begin snow or ice control operations using the following guidelines:
 - Single event snow accumulation of 3 or more inches Monday-Friday and 4 inches or more on Saturday, Sunday and holidays.
 - Drifting of snow that causes problems for travel.
 - Icy conditions that seriously affects travel.
 - Time of snowfall in relationship to heavy use of streets.
 - **If Utility Superintendent feels snow emergency is needed, a text or phone call is required to be sent to the Mayor. The Mayor will call snow emergency by texting Utility Superintendent and City Clerk.**
 - **City Clerk will notify media and post snow emergency.**
 - **Utilities employees will place orange notices on vehicles requiring to be moved and call tow truck for removal of vehicles.**
2. Snow plowing and ice control operations:

Priority and schedule of street plowing is based on street function, traffic volume and importance to the welfare of the community. The main business streets, adjacent business areas and high-volume traffic routes are plowed first. Per an agreement with the Ottertail County Highway Department, the county plows snow on main street of Vergas (Highway 4), to the curb or middle, and the City of Vergas removes the snow from along the curb or middle of street. The City is reimbursed by the county for snow removal.

 - Operations continue until all roads are passable.
 - Generally, gravel roads are not plowed until frozen, unless over 5 inches of snow or based on conditions impacting road passage.
 - Widening and clean-up operations may occur immediately or on a following workday depending on conditions.
 - Sand and salt mixtures, here and after referred to as sanding, are utilized for ice and slippery areas. Sanding is done the first initial time of plowing operations or whenever hazardous ice or slippery conditions develop. Priority is given to intersection's, curves and hills. Additional sanding is at the discretion of the City Utilities Department. The City of Vergas does not have a dry pavement policy, so drivers will always have to be careful during the winter season.
 - Subject to availability of time, walking paths will be plowed and maintained, however, to avoid killing vegetation there will be no sanding.
3. As outlined in City Ordinance 71.04 during a declared snow emergency or **enough snow has accumulated to plow**; no motor vehicle shall be left parked on any street or public way in the city until street cleared on both sides of accumulated snow or declared emergency canceled.

If the owner does not immediately remove the motor vehicle or the owner cannot be located, the utility maintenance employees are authorized to have the motor vehicle removed at the owner's expense.

4. Snow and ice control operations will be conducted only when weather conditions do not endanger the safety of city employee's and equipment. Factors that may delay snow and ice control operations include; severe cold, significant winds limiting visibility and rapid

accumulation prohibiting effective operations. The City Utilities Department will determine when snow and ice removal operations need to be suspended due to weather conditions.

5. Snow and ice removal from driveways and sidewalks are the responsibility of residential and business property owners. Exceptions may occur as determined by the City Utilities Department in instances of extreme snow volume or other circumstances. It is not the intent to fill resident driveways or sidewalks with snow.
6. The Utilities Department will haul snow away from intersections within city limits when accumulated snow has created an unsafe condition for vehicular or pedestrian passage. Any other hauling away of snow is at the discretion of the Utilities Supervisor.
7. The City Office is kept informed and updated regarding snow and ice operations. Questions or concerns can be directed to the City Office.
8. **OTHER CONSIDERATIONS:**
 - Property owners are responsible for clearing snow and ice away from mailbox to insure delivery of mail.
 - To allow for effective snow removal, trash containers should be placed on driveway aprons or boulevards at least 10 feet behind the street curb or edge. Do not place on the street. The City is not responsible for tipped, spilled or damaged containers.
 - Fire Hydrants need to be kept clear of snow to allow for quick access in the event of a fire. The City Utilities Department make's every effort to keep hydrants clear, however due to workload, fire hydrants may not be immediately cleared. City residents are asked for support to keep fire hydrants clear of snow in their neighborhood.
 - Refer to City Policy regarding damage to mailboxes, sod, sprinkler systems located in the right-of-way.

Adopted this 9th day of February, 2020 by the City Council of the City of Vergas.

Julie Bruhn
Mayor

ATTEST:

Julie Lammers
City Clerk-Treasurer

Adopted 02/09/2020
Revised 01/10/2023

' 71.04 DECLARATION OF SNOW EMERGENCY; PARKING PROHIBITED.

(A) The Mayor or other designated official may declare a snow emergency in the city. The emergency shall continue in effect for a period of 24 hours or until the snow has been removed from the city's streets or until the snow emergency has been rescinded by action of the Mayor, Police Chief or other designated officer.

(B) Notice of the declaration of a snow emergency shall be given by notifying the local news media; however, the notification shall be a service aid only and not a duty on the part of the officials.

(C) During a declared snow emergency or **enough snow has accumulated to plow**, no motor vehicle shall be left parked on any street or public way in the city until the declared emergency is canceled or, if no emergency is declared, until the street is cleared on both sides of accumulated snow.

(D) During a declared snow emergency, any city employee, who finds a motor vehicle in violation of this section shall attempt to contact the owner of the motor vehicle and require the owner to immediately move the motor vehicle so as not to be in violation of this section. **If the owner does not immediately remove the motor vehicle or the owner cannot be located, the utility maintenance employees are authorized to have the motor vehicle removed at the owner's expense.**

Penalty, see ' 10.99

**Street / Sidewalks/ Yard Waste Committee
Streets/Sidewalks/Yard Waste
Vergas Event Center
4:00 PM on Thursday, December 29, 2022**

5. Parking

Files Attached

- 20220208-Vergas-ParkingConcept1-bmgrev (003).pdf
- County Garage Parking Options.pdf

For Review

12/28/2022 10:31:28 AM

- NOTES:
- 1. CURB LINES DRAWN FROM AERIAL IMAGERY.
 - 2. PROPERTY INFORMATION OBTAINED FROM OTTER TAIL COUNTY GIS.
 - 3. 1ST AVENUE S ADT ~ 2,350 PER MNDOT.
 - 4. PARKING SETBACKS PER MN STATUE 169.34.
 - 5. ROADWAY WIDTH AND PARALLEL PARKING PER MN STATUE 8820.9936 FOR ADT<10,000.
 - 6. 45° ANGLED PARKING PER MN STATUE 8820.9961 FOR ADT<3,000.

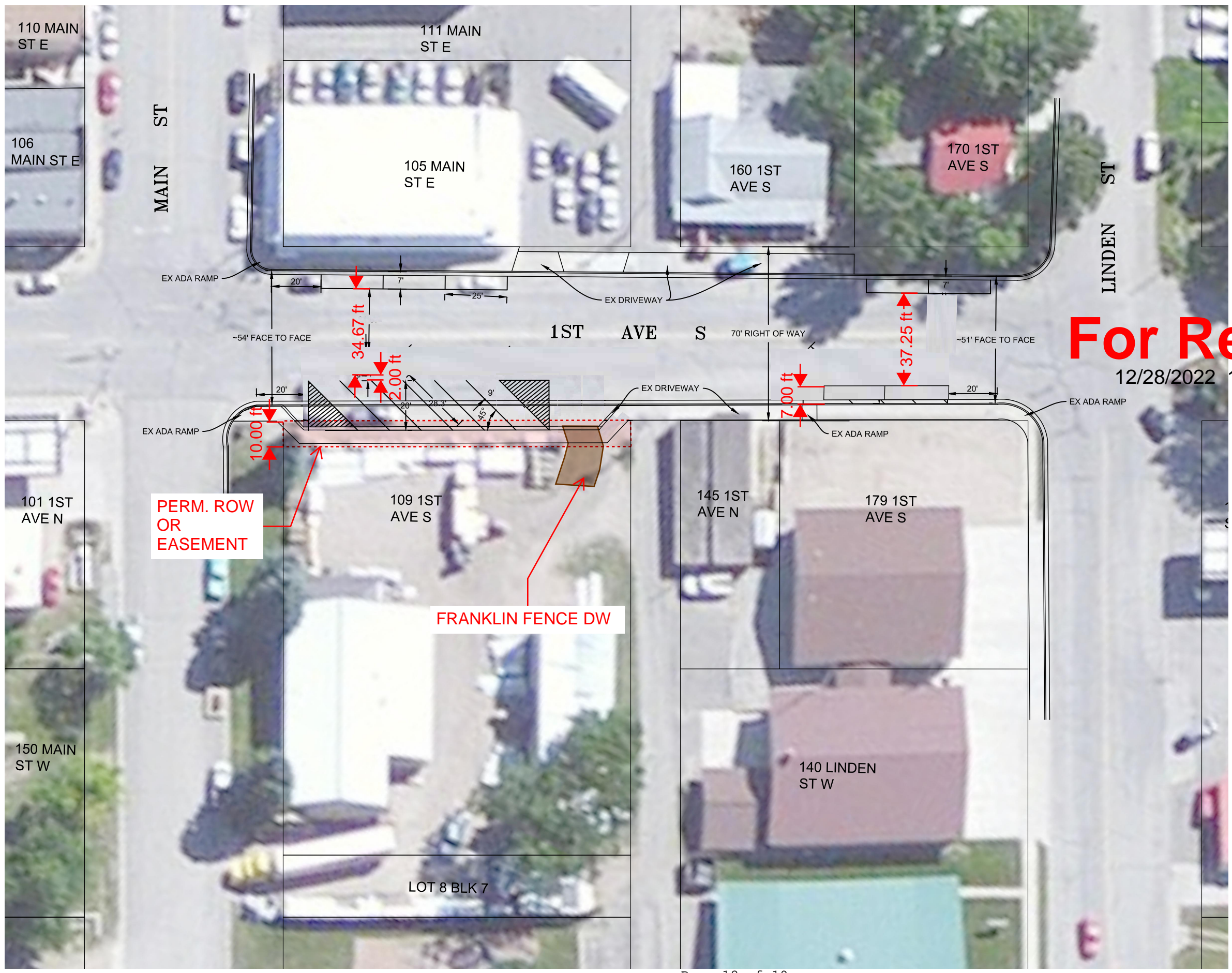
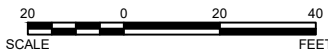
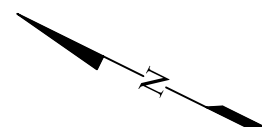
Sketch based on drawing provided by City from KLJ.

Offset the parking in front of Franklin Fence by 10'. Would require ROW/Easement acquisition.

Reduced angled parking stall amount by one in front of Franklin Fence to allow for driveway entrance.

Changed angled parking to parallel parking on side of Fire & Rescue Building.

WIDSETH



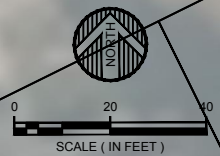
OLD COUNTY GARAGE -- PARKING OPTION 1A
90 DEGREE PARKING YIELDS ~15 STALLS (2-WAY)

OLD COUNTY GARAGE -- PARKING OPTION 1B
INCL. PARALLEL PARKING YIELDS ~ 21 STALLS
(PARKING LOT BECOMES ONE-WAY)

E LINDEN STREET

OLD COUNTY GARAGE -- PARKING OPTION 2
45 DEGREE PARKING YIELDS ~18-20 STALLS
(PARKING LOT BECOMES A ONE-WAY)

E LINDEN STREET



**Street / Sidewalks/ Yard Waste Committee
Streets/Sidewalks/Yard Waste
Vergas Event Center
4:00 PM on Thursday, December 29, 2022**

6. CHAH 4 and CSAH 60

Files Attached

- Speed study on CSAH 4 and 60.pdf



December 21, 2022

Mr. Bruce E. Albright
1210 E Frazee Ave
Vergas, MN 56587

Re: Speed Study on CSAH 4 and CSAH 60 in Vergas

Dear Bruce:

Based on your request for a Speed Study on a section of County State Aid Highway (CSAH) 4 and CSAH 60 in Vergas, dated February 7, 2021, the Otter Tail County Board of Commissioners adopted Resolution 2021-32 on February 23, 2021 that the Minnesota Department of Transportation (Mn/DOT) proceed with a study in this area.

Mn/DOT has completed their study and are not recommending any changes to the speed limit in this area. Attached for your information is a copy of their letter and study results dated December 19, 2022.

We will be revising the 55 mph speed limit sign with an End 40 mph sign as recommended.

If you have any questions or require more information, please feel free to contact me at any time.

Sincerely,
Otter Tail County Highway Department

Charles H. Grotte, P.E.
County Engineer

Cc: File

Matthew Yavarow, Assistant County Engineer
Ricky Swanberg, Lead Sign Technician
Julie Lammers, City of Vergas



**MnDOT District 4
1000 Highway 10 West
Detroit Lakes, MN 56501**

December 19, 2022

Charles H. Grotte, P.E.
County Engineer
Otter Tail County Highway Dept.
505 South Court Street, Suite 1
Fergus Falls, MN 56537

Dear Mr. Grotte,

MnDOT received a speed study request for County State Aid Highways (CSAH) 4 and 60 in the City of Vergas. The speed study was requested by a Resolution from the Otter Tail County Board of Commissioners on behalf of the City of Vergas.

MnDOT has completed the speed study for this section of CSAH 60 on the northwest end of Long Lake at the intersection of CSAH 4. A radar check was conducted on CSAH 60 where the current posted speed limit is 40 mph westbound entering the City of Vergas and 55 mph eastbound leaving the City of Vergas. The radar check showed that the 85th percentile speed was 48 mph for vehicles traveling eastbound, and 47 mph for vehicles traveling westbound. The 85th percentile speed reflects a safe speed for existing conditions as perceived by most of the drivers. Speed checks north of CSAH 60 on CSAH 4 were not conducted as this is a stop condition for a T-intersection.

While the road curves around the lake in this area, there appears to be adequate sight lines for the existing intersections. To address the numerous driveways on this stretch of roadway, the county has striped this section as no passing.

MnDOT also researched the crashes for the last five years along CSAH 60 within the study area. The crash reports showed that there were 4 crashes in the last 5 years on this segment of road. There were no injuries resulting from the crashes.

Based on the information above, a reduction in the current 40 mph speed limit is not recommended. The present speed limit is appropriate for CSAH 60 in the area requested to be studied. The existing 55 mph speed limit sign on the north side of Long Lake was installed by MnDOT when this roadway was MN TH 228. One suggestion for consideration would be to remove the eastbound 55 mph speed limit sign and replace it with an End 40 mph sign. The 55 mph speed limit sign is not required as this is a statutory speed limit. The End 40 mph sign will reinforce the existing speed limit and may discourage drivers from speeding up as they leave the City of Vergas prior to the intersection of CSAH 4.

Thank you for your request.

Sincerely,



Trudy A. Kordosky
District Traffic Engineer

CC: Nathan Gannon, DSAE



FIELD SPEED SURVEY SUMMARY

Road # OTC 60
 Ref. Pt. _____
 County OTTER TAIL
 Date 6/7/2021
 Day Monday

Zone 40 MPH
 Time 6:30-8:30 AM
 Weather CLEAR
 Machine _____
 Observer(s) _____

Location BEACH/RA ENTRANCE
 Road Type 2-lane
 NB: 85th %ile 63 MPH Pace 53 to 62
 SB: 85th %ile 62 MPH Pace 52 to 61

PASSENGER VEHICLES									
SPEED (mph)	NORTH BOUND				SPEED (mph)	SOUTH BOUND			
	INDIVIDUAL VEHICLES		ACCUMULATED VEH.			INDIVIDUAL VEHICLES		ACCUMULATED VEH.	
	# of vehicles	% vehicles	# of vehicles	% vehicles		# of vehicles	% vehicles	# of vehicles	% vehicles
80		0.0%	110	100%	80		0.0%	96	100%
79		0.0%	110	100%	79		0.0%	96	100%
78		0.0%	110	100%	78		0.0%	96	100%
77		0.0%	110	100%	77		0.0%	96	100%
76	1	0.9%	110	100%	76		0.0%	96	100%
75		0.0%	109	99%	75		0.0%	96	100%
74		0.0%	109	99%	74		0.0%	96	100%
73		0.0%	109	99%	73		0.0%	96	100%
72		0.0%	109	99%	72		0.0%	96	100%
71	1	0.9%	109	99%	71	2	2.1%	96	100%
70		0.0%	108	98%	70		0.0%	94	98%
69		0.0%	108	98%	69		0.0%	94	98%
68	1	0.9%	108	98%	68		0.0%	94	98%
67		0.0%	107	97%	67		0.0%	94	98%
66	1	0.9%	107	97%	66	1	1.0%	94	98%
65	4	3.6%	106	96%	65	4	4.2%	93	97%
64	6	5.5%	102	93%	64	3	3.1%	89	93%
63	3	2.7%	96	87%	63	4	4.2%	86	90%
62	4	3.6%	93	85%	62	4	4.2%	82	85%
61	5	4.5%	89	81%	61	5	5.2%	78	81%
60	11	10.0%	84	76%	60	6	6.3%	73	76%
59	5	4.5%	73	66%	59	10	10.4%	67	70%
58	15	13.6%	68	62%	58	2	2.1%	57	59%
57	11	10.0%	53	48%	57	10	10.4%	55	57%
56	12	10.9%	42	38%	56	12	12.5%	45	47%
55	9	8.2%	30	27%	55	9	9.4%	33	34%
54	3	2.7%	21	19%	54	9	9.4%	24	25%
53	9	8.2%	18	16%	53	6	6.3%	15	16%
52	3	2.7%	9	8%	52	6	6.3%	9	9%
51	2	1.8%	6	5%	51	1	1.0%	3	3%
50	2	1.8%	4	4%	50	2	2.1%	2	2%
49	1	0.9%	2	2%	49		0.0%	0	0%
48	1	0.9%	1	1%	48		0.0%	0	0%
47		0.0%	0	0%	47		0.0%	0	0%
46		0.0%	0	0%	46		0.0%	0	0%
45		0.0%	0	0%	45		0.0%	0	0%
44		0.0%	0	0%	44		0.0%	0	0%
43		0.0%	0	0%	43		0.0%	0	0%
42		0.0%	0	0%	42		0.0%	0	0%
41		0.0%	0	0%	41		0.0%	0	0%
40		0.0%	0	0%	40		0.0%	0	0%



FIELD SPEED SURVEY SUMMARY

Road # OTC 4
 Ref. Pt. _____
 County Otter Tail
 Date 8/16/2019
 Day Friday

Zone 55 MPH
 Time 7:30 AM
 Weather clear
 Machine _____
 Observer(s) _____

Location Just east of OTC 60

Road Type 2-lane
 NB: 85th %ile 63 MPH Pace 56 to 65
 SB: 85th %ile 64 MPH Pace 58 to 67

PASSENGER VEHICLES									
SPEED (mph)	NORTH BOUND EAST BOUND				SPEED (mph)	SOUTH BOUND			
	INDIVIDUAL VEHICLES		ACCUMULATED VEH.			INDIVIDUAL VEHICLES		ACCUMULATED VEH.	
	# of vehicles	% vehicles	# of vehicles	% vehicles		# of vehicles	% vehicles	# of vehicles	% vehicles
80		0.0%	76	100%	80		0.0%	53	100%
79	1	1.3%	76	100%	79		0.0%	53	100%
78		0.0%	75	99%	78		0.0%	53	100%
77		0.0%	75	99%	77		0.0%	53	100%
76		0.0%	75	99%	76		0.0%	53	100%
75		0.0%	75	99%	75		0.0%	53	100%
74		0.0%	75	99%	74		0.0%	53	100%
73		0.0%	75	99%	73		0.0%	53	100%
72		0.0%	75	99%	72	1	1.9%	53	100%
71		0.0%	75	99%	71		0.0%	52	98%
70		0.0%	75	99%	70		0.0%	52	98%
69		0.0%	75	99%	69		0.0%	52	98%
68	1	1.3%	75	99%	68	1	1.9%	52	98%
67	1	1.3%	74	97%	67	1	1.9%	51	96%
66	1	1.3%	73	96%	66	2	3.8%	50	94%
65	5	6.6%	72	95%	65	2	3.8%	48	91%
64	2	2.6%	67	88%	64	2	3.8%	46	87%
63	1	1.3%	65	86%	63	2	3.8%	44	83%
62	4	5.3%	64	84%	62	4	7.5%	42	79%
61	5	6.6%	60	79%	61	6	11.3%	38	72%
60	7	9.2%	55	72%	60	2	3.8%	32	60%
59	3	3.9%	48	63%	59	6	11.3%	30	57%
58	3	3.9%	45	59%	58	5	9.4%	24	45%
57	7	9.2%	42	55%	57	1	1.9%	19	36%
56	3	3.9%	35	46%	56	1	1.9%	18	34%
55	2	2.6%	32	42%	55	3	5.7%	17	32%
54	1	1.3%	30	39%	54	2	3.8%	14	26%
53	2	2.6%	29	38%	53	1	1.9%	12	23%
52	2	2.6%	27	36%	52	3	5.7%	11	21%
51	3	3.9%	25	33%	51	2	3.8%	8	15%
50	6	7.9%	22	29%	50	3	5.7%	6	11%
49	1	1.3%	16	21%	49		0.0%	3	6%
48	2	2.6%	15	20%	48		0.0%	3	6%
47	7	9.2%	13	17%	47		0.0%	3	6%
46	1	1.3%	6	8%	46	3	5.7%	3	6%
45	1	1.3%	5	7%	45		0.0%	0	0%
44	2	2.6%	4	5%	44		0.0%	0	0%
43		0.0%	2	3%	43		0.0%	0	0%
42		0.0%	2	3%	42		0.0%	0	0%
41		0.0%	2	3%	41		0.0%	0	0%
40	2	2.6%	2	3%	40		0.0%	0	0%



FIELD SPEED SURVEY SUMMARY

Road # OTC 60
 Ref. Pt. _____
 County Otter Tail
 Date 8/15/2019
 Day Thursday

Zone 40 MPH
 Time 7:30 AM
 Weather clear
 Machine _____
 Observer(s) _____

Location Loon Lake Park Entrance
 Road Type 2-lane
 EB: 85th %ile 47 MPH
 WB: 85th %ile 48 MPH
 Pace 38 to 47
 Pace 37 to 46

PASSENGER VEHICLES									
SPEED (mph)	EAST BOUND				SPEED (mph)	WEST BOUND			
	INDIVIDUAL VEHICLES		ACCUMULATED VEH.			INDIVIDUAL VEHICLES		ACCUMULATED VEH.	
	# of vehicles	% vehicles	# of vehicles	% vehicles		# of vehicles	% vehicles	# of vehicles	% vehicles
60		0.0%	146	100%	60		0.0%	98	100%
59		0.0%	146	100%	59	1	1.0%	98	100%
58		0.0%	146	100%	58		0.0%	97	99%
57		0.0%	146	100%	57		0.0%	97	99%
56		0.0%	146	100%	56		0.0%	97	99%
55		0.0%	146	100%	55		0.0%	97	99%
54	1	0.7%	146	100%	54	1	1.0%	97	99%
53		0.0%	145	99%	53		0.0%	96	98%
52		0.0%	145	99%	52	1	1.0%	96	98%
51	1	0.7%	145	99%	51	3	3.1%	95	97%
50	3	2.1%	144	99%	50	2	2.0%	92	94%
49	3	2.1%	141	97%	49	5	5.1%	90	92%
48	6	4.1%	138	95%	48	3	3.1%	85	87%
47	8	5.5%	132	90%	47		0.0%	82	84%
46	8	5.5%	124	85%	46	4	4.1%	82	84%
45	9	6.2%	116	79%	45	4	4.1%	78	80%
44	13	8.9%	107	73%	44	3	3.1%	74	76%
43	17	11.6%	94	64%	43	9	9.2%	71	72%
42	9	6.2%	77	53%	42	7	7.1%	62	63%
41	11	7.5%	68	47%	41	8	8.2%	55	56%
40	12	8.2%	57	39%	40	10	10.2%	47	48%
39	13	8.9%	45	31%	39	5	5.1%	37	38%
38	12	8.2%	32	22%	38	14	14.3%	32	33%
37	7	4.8%	20	14%	37	5	5.1%	18	18%
36	3	2.1%	13	9%	36	1	1.0%	13	13%
35	4	2.7%	10	7%	35	2	2.0%	12	12%
34	4	2.7%	6	4%	34	5	5.1%	10	10%
33		0.0%	2	1%	33	1	1.0%	5	5%
32	2	1.4%	2	1%	32	3	3.1%	4	4%
31		0.0%	0	0%	31	1	1.0%	1	1%
30		0.0%	0	0%	30		0.0%	0	0%
29		0.0%	0	0%	29		0.0%	0	0%
28		0.0%	0	0%	28		0.0%	0	0%
27		0.0%	0	0%	27		0.0%	0	0%
26		0.0%	0	0%	26		0.0%	0	0%
25		0.0%	0	0%	25		0.0%	0	0%
24		0.0%	0	0%	24		0.0%	0	0%
23		0.0%	0	0%	23		0.0%	0	0%
22		0.0%	0	0%	22		0.0%	0	0%
21		0.0%	0	0%	21		0.0%	0	0%
20		0.0%	0	0%	20		0.0%	0	0%