

**Event Center Advisory Board
November Meeting
Zoom Teleconference
6:30 PM on Wednesday, November 4, 2020**

1. Zoom Teleconference Info

Join Zoom Meeting

<https://us02web.zoom.us/j/2670942170>

Meeting ID: 267 094 2170

One tap mobile

+13126266799,,2670942170# US (Chicago)

+16468769923,,2670942170# US (New York)

Dial by your location

+1 312 626 6799 US (Chicago)

Meeting ID: 267 094 2170

2. Approval of the Agenda

3. Approval of Minutes from October 5, 2020

4. Kitchen Project Update

5. Remodeling Project Update

6. Walking at Event Center

7. Event Center Rates

8. Follow up on Action Items

Table of Contents

3. Approval of Minutes from October 5, 2020.....	3
5. Remodeling Project Update.....	5
1. Zoom Teleconference Info.....	11

**Event Center Advisory Board
November Meeting
Zoom Teleconference
6:30 PM on Wednesday, November 4, 2020**

3. Approval of Minutes from October 5, 2020

Files Attached

- VEC 10-5-20 Minutes.pdf

CITY OF VERGAS
Event Center Advisory Minutes
ZOOM Teleconference
6:30 P.M. on Monday, October 5, 2020

The City of Vergas Event Center Advisory Committee was called to order by Chairperson Logan Dahlgren on Monday, October 5, 2020 at 6:32 pm with the following members present: Logan Dahlgren, Paul Haarstick, Julie Lammers, Vanessa Perry, and Paul Pinke. Absent: Mary Ditterich and Jay Norby. Guests included: Elissa Novotny.

Approval of the Agenda

Motion by Pinke, seconded by Perry to approve the meeting agenda. Motion carried unanimously.

Approval of Minutes from September 9, 2020

Motion by Lammers, seconded by Pinke to approve the minutes from September 9, 2020. Motion carried unanimously.

Kitchen Project Update

No update.

Remodeling Project Update

Lammers updated the Committee that we have received two out of the three proposals required. We are still looking for one more proposal. Perry said that she knows a contractor who will be getting her a proposal this week.

Meeting was called to recess at 6:39 pm until Thursday, October 8, 2020, at 6:30 pm. Meeting resumed at 6:36 pm on Thursday, October 8, 2020.

Lion's Request

Due to COVID-19 restrictions, the Lion's club was unable to use the Event Center for three months. The organization has requested a refund for those months. Lammers also updated the Committee that there are no paid events until 12/31/2020.

Motion by Haarstick, seconded by Perry to recommend to Council to credit the Lion's three months on next year's payment in the amount of \$225. Motion carried unanimously.

Remodeling Project Update, continued

Lammers randomly selected proposals to read to the committee. The following proposals were submitted. Proposals shall be included in permanent records of the Committee.

Superior Edge Construction: \$134,578.95, final completion by May 2021.

Hammer's Construction: \$112,530, final completion by May 2021.

Summer's Construction: \$59,463, final completion by December 2020, weather permitting.

Motion by Dahlgren, seconded by Perry to recommend to Council to award the Event Center Remodeling project to Summer's Construction. Motion carried unanimously.

Council Recommendations

- Credit the Lion's three months on next year's payment in the amount of \$225.
- Award the Event Center Remodeling project to Summer's Construction.

Follow up Actions

None

The business for which the meeting was called having been completed, the meeting was adjourned at 6:50 p.m.

Respectfully submitted,

Paul Haarstick, Secretary

**Event Center Advisory Board
November Meeting
Zoom Teleconference
6:30 PM on Wednesday, November 4, 2020**

5. Remodeling Project Update

Files Attached

- 20201023134338366.pdf - Franklin Fence Quote for roll up door
- Cookson ESC10 Lit.pdf

Franklin Fence Co.

PO Box 66 • Vergas, MN 56587

Ph. 218-342-2084
Fax 218-342-2723

ESTIMATE

Customer City of Vergas

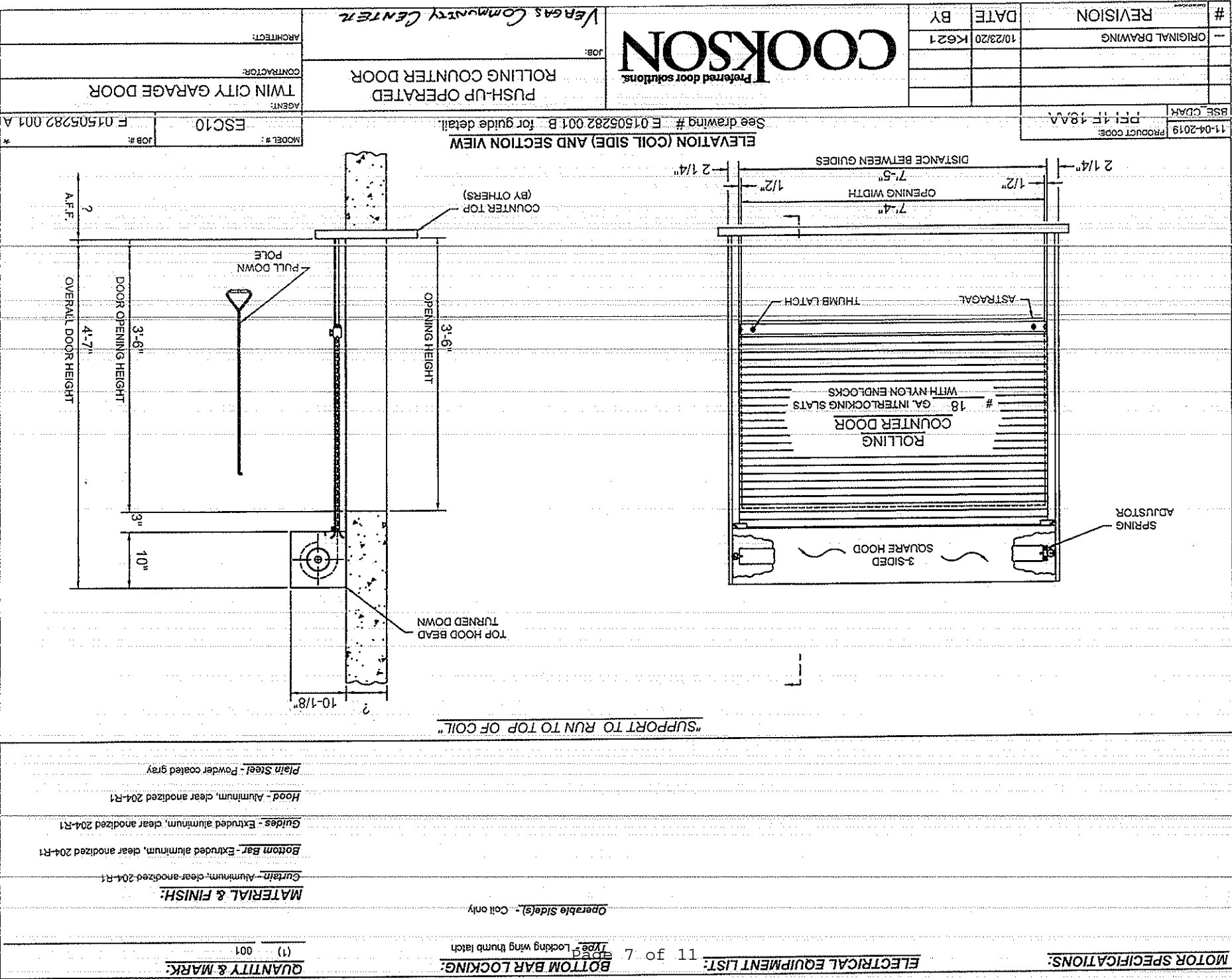
Street _____ Phone _____
City _____ State _____

Job No. _____ Date: 10/23/20
Deliver To: _____
Address: _____
Directions: _____

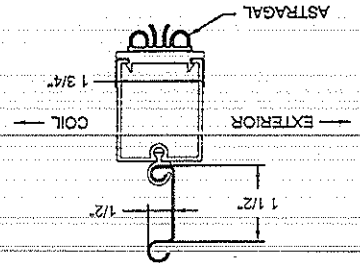
	QTY.	DESCRIPTION	EXT. QTY.	UNIT PRICE	UNIT	EXTENSION
1						
2						
3						
4	1	7'-4"x3'-6" Cookson Model ES10				
5		Canister Shutter				
6		Installed by Twin City Garage Door				3780cc
7						
8						
9						
10						
11		93780.00				
12		9378.77				
13		64058.77				
14						
15						
16						
17						
18						
19						
20						
21						
22						
23						
24						
25						
26						
27						
28						
29						
30						

This estimate is for materials listed above only and is not guaranteed to build or complete any specific project. It is based on pricing as of this date. Prices are subject to change due to a changing market and/or availability. Clerical errors are subject to correction.

Subtotal	
Delivery	
Sales Tax	
TOTAL	

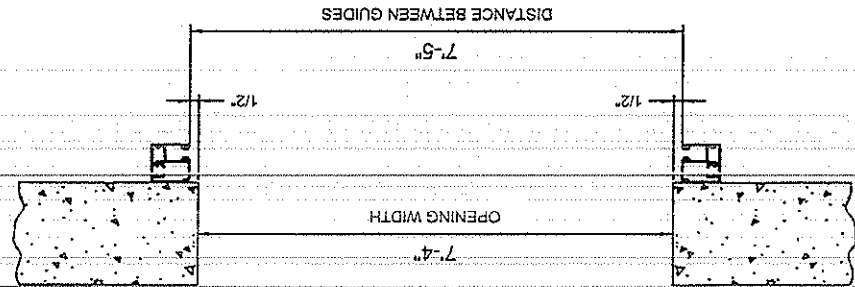


05-08-2020		CD1 EXT		PFI 1F 18AA		DISTANCE BETWEEN GUIDES		MODEL # : JOB #:		ESC10 E-01505282-001-B	
PRODUCT CODE								AGENT:		TWIN CITY GARAGE DOOR	
								CONTRACTOR:			
								JOB:		VERGAS Community Center	
								COUNTER DOOR EXTRUDED GUIDE ASSEMBLY		ARCHITECT:	
								BY		DATE	
								K621		10/23/20	



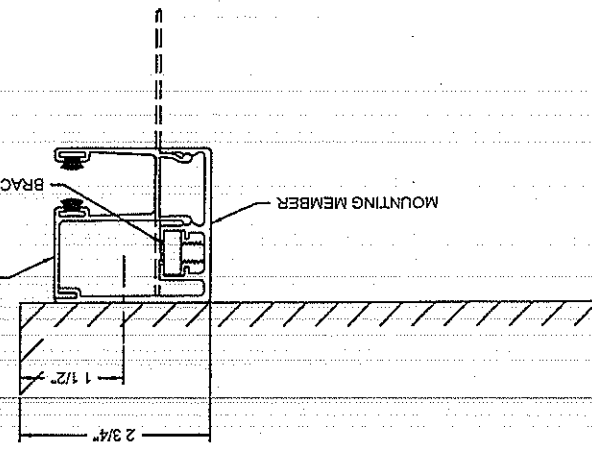
CP6005

BOTTOM BAR / SLAT DETAIL



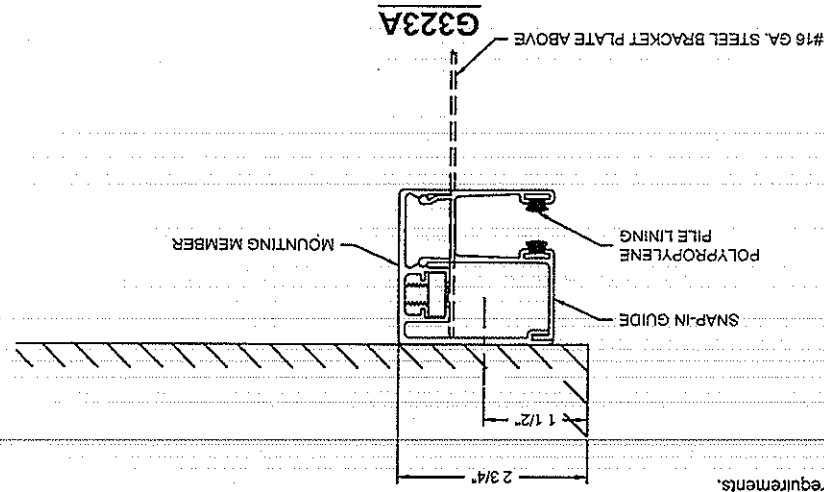
PLAN OF OPENING
MK: 001

WALL FASTENERS:
 AT MAXIMUM 18" ON CENTER
 • 1/4" x 1-3/8" LONG EXPANSION BOLTS.
 (SOLID MASONRY REQUIRED)



NOTE: Wall construction detail shown is for illustrative purposes only, does not imply compliance with building requirements, and must meet architectural specifications to properly support product. Products designed with wind load requirements must be properly fastened to structural members as specified in order to avoid catastrophic failure. Wall construction and closure installation shall be in accordance with the local authority having jurisdiction requirements.

WALL FASTENERS:
 AT MAXIMUM 18" ON CENTER
 • 1/4" x 1-3/8" LONG EXPANSION BOLTS.
 (SOLID MASONRY REQUIRED)



ROLLING COUNTER DOOR

Models ESC10 and ESC20 (integral frame and sill)



AN ELEGANT, UNOBTRUSIVE WAY TO SECURE FINISHED OPENINGS

SMALLER COMPONENTS DELIVER A CLEAN, PROFESSIONAL APPEARANCE

Rolling Counter Doors are used in both interior and exterior applications. Built to exact opening specifications using compact guides, slats, brackets and hood, they offer a more streamlined look than traditional rolling doors. When a full door with compact door components is desired, full height units are available.

A GREAT CHOICE FOR SERVICE OPENINGS

Counter Doors are often used in cafeterias, stadiums, arenas, hospitality and educational facilities, public spaces, healthcare offices, and many other locations.

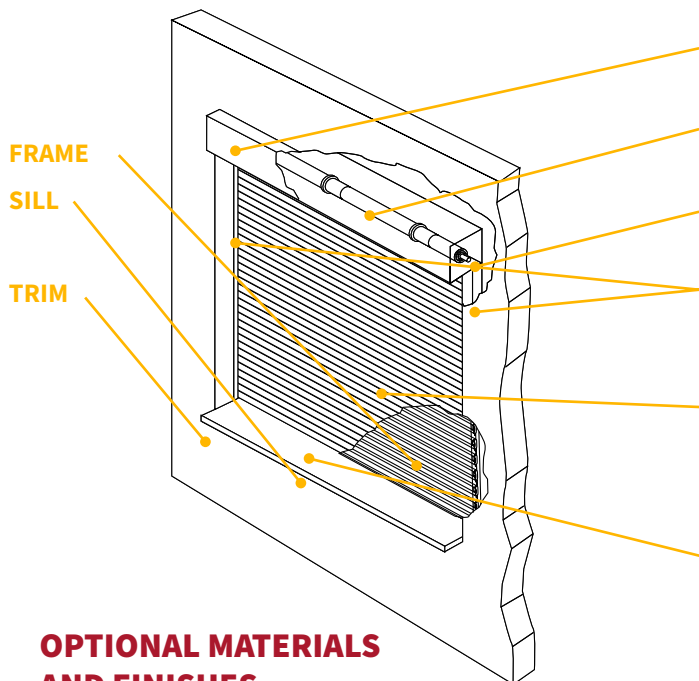
COUNTER DOORS WITH INTEGRAL FRAMES AND SILLS WORK WITH INTERIOR RATED AND NON-RATED WALLS

Offering a custom appearance (with no exposed edges) and fast installation, slip-in units arrive ready to be set into existing walls. Units may be used in masonry or drywall openings from 4" to 13" thick.

A SPACE-SAVING DESIGN OPTION

As an alternate design, concealed tubular motors provide a solution for strict dimensional limitations around the header or aesthetic requirements that lend themselves to its smaller, compact design.

STANDARD COMPONENT MATERIALS AND FINISHES



- HOOD** - Galvanized steel with GalvaNex™ polyester enamel finish to match curtain.
- COUNTER-BALANCE SHAFT** - Steel. Supports curtain and contains torsion springs for assisting operation.
- BRACKETS** - Steel with powder coating to match curtain. Bolt to guide assembly and support counter-balance shaft and curtain.
- GUIDES** - Two piece clear anodized extruded aluminum in clear anodized finish with polypropylene pile runners. Side rail assemblies bolt to the wall and support the entire weight of the unit.
- CURTAIN** - Galvanized steel with GalvaNex™ polyester enamel finish in Gray, Tan, or White. Interlocking roll-formed flat-faced slats with end locks riveted to the ends of alternate slats to maintain curtain alignment and prevent wear.
- BOTTOM BAR** - Clear anodized extruded aluminum equipped with vinyl astragal/weather seal. Lock mechanisms available.

OPTIONAL MATERIALS AND FINISHES

- ▶ Aluminum in clear and color anodized - Only available for ESC10 model
- ▶ Stainless steel - 300 series in #4 finish
- ▶ SpectraShield® Powder Coating in more than 180 colors
- ▶ Although it is standard on the ESC10 model, Galvanized steel with GalvaNex™ polyester enamel finish is offered as an option on the ESC20 model.

Brackets, Guides and Bottom Bar

- ▶ Hot-dip galvanizing on steel components
- ▶ Zinc-enriched, corrosion-resistant powder coating in Gray

OPTIONAL WINDLOAD

The rolling counter door can be configured to withstand windload requirements of up to 40 PSF and impact ratings of up to 50 FPS.

WITH INTEGRAL FRAME AND SILL

- HOOD** - Stainless steel
- BRACKETS** - Stainless steel.
- CURTAIN** - Stainless steel
- FRAME** - Welded stainless steel head and jambs. Guide groove is incorporated into jamb design.
- SILL** - Stainless steel provides a seamless, custom look.
- TRIM** - Stainless steel jamb trim angles. Head trim optional

*All stainless steel is 300 series in #4 finish

OPERATION AND STRUCTURAL REQUIREMENTS

Hand-crank, push-up and a variety of motor options are available

This product is supported by a guide assembly attached to the jamb construction. No additional header support is required unless hood supports are mandated by a larger opening width.



CUSTOM-DESIGNED SOLUTIONS

Contact our experienced Architectural Design Support Team for help in customizing our products to fit your specific application. Call 800.233.8366 ext. 4551 • architecturalsupport@cornellcookson.com

**Event Center Advisory Board
November Meeting
Zoom Teleconference
6:30 PM on Wednesday, November 4, 2020**

1. Zoom Teleconference Info

Join Zoom Meeting

<https://us02web.zoom.us/j/2670942170>

Meeting ID: 267 094 2170

One tap mobile

+13126266799,,2670942170# US (Chicago)

+16468769923,,2670942170# US (New York)

Dial by your location

+1 312 626 6799 US (Chicago)

Meeting ID: 267 094 2170