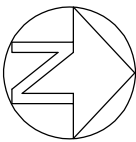
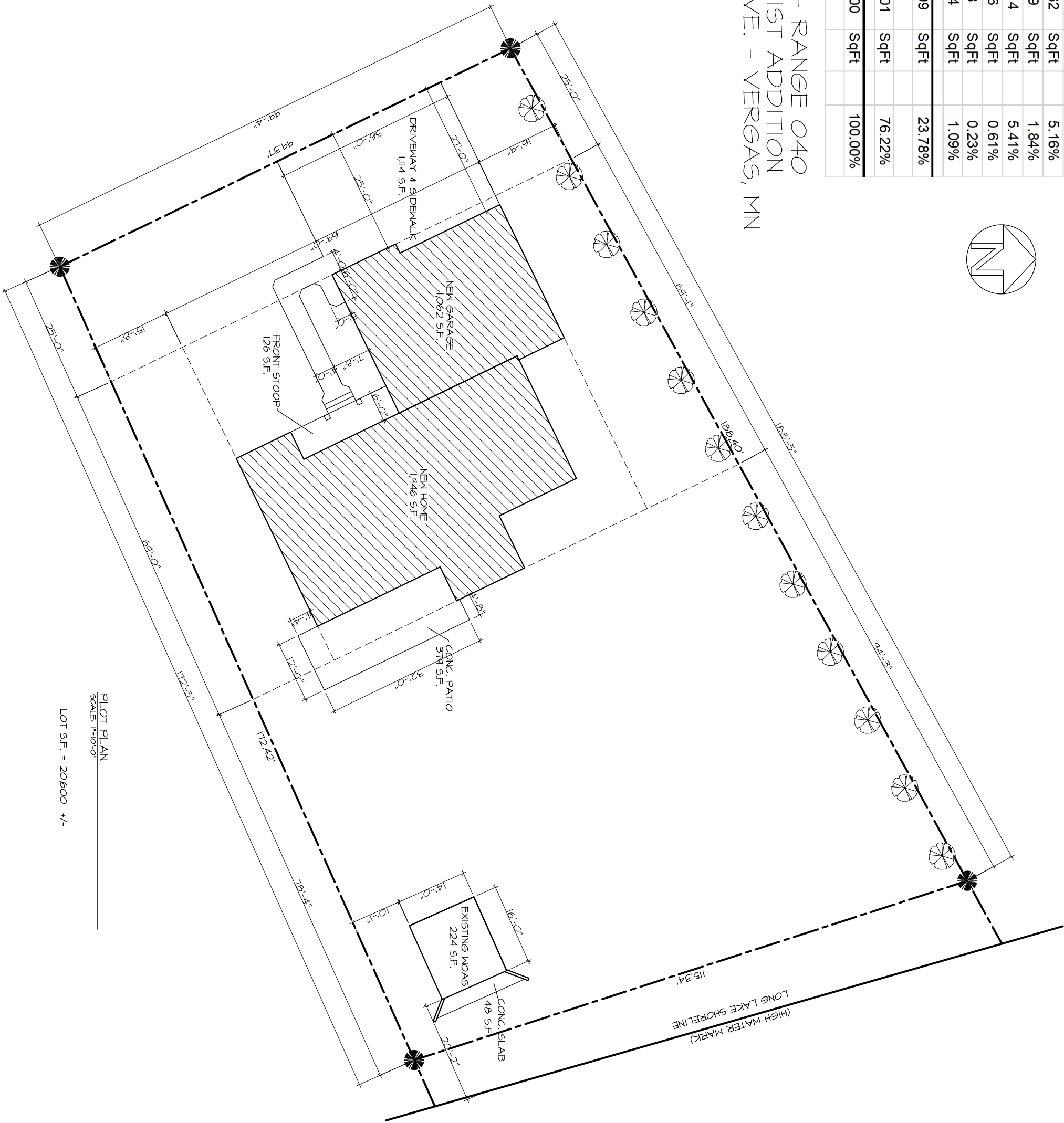


Total House	1946	SqFt	9.45%
Total Attached Garage	1062	SqFt	5.16%
Total Lakeside Patio	379	SqFt	1.84%
Total Sidewalk & Driveway	1114	SqFt	5.41%
Total Front Stoop	126	SqFt	0.61%
Total WOAS Conc. Slab	48	SqFt	0.23%
Total Existing WOAS	224	SqFt	1.09%
Total Lot Coverage:	4899	SqFt	23.78%
Total Open Space:	15701	SqFt	76.22%
Total Lot Size:	20600	SqFt	100.00%



SEC 30 - TWP 137 - RANGE 040
KEILEY SHORES 1ST ADDITION
1050 EAST SCHARF AVE. - VERGAS, MN



PLOT PLAN
SCALE: 1"=10'-0"

LOT S.F. = 20,600 +/-

PAGE 1 OF 7	ATTENTION: Plans furnished were prepared by draftsmen who are not qualified as professional architects or engineers. We expressly disclaim any liability for errors on the plans. Use of such plans are at the sole risk of the user and are furnished WITHOUT any WARRANTY. Responsibility for the usage of correct structural materials, spans, load bearing, and construction methods are the responsibility of the builder, owner, or user of these plans.	KINNEBERG LAKE HOME	
		1050 EAST SCHARF AVE. VERGAS, MN	DRAWN BY: MELISSA M. DATE: 4/12/24