



STREET & AREA LIGHTING LAWRENCE LAKE FIRST ADDITION

August 29, 2023

DECORATIVE LIGHT OPTIONS



**Holophane
Arlington LED**

- Available with:
- 14-foot pole.
 - 6,500 lumen lantern-style fixture.
 - 4,000K color temperature.
 - Black finish.



**Holophane
Granville II LED**

- Available with:
- 14-foot pole.
 - 7,000 lumen acorn-style fixture.
 - 4,000K color temperature.
 - Black finish.



**Holophane Esplanade
LED Pendant**

- Available with:
- 30-foot pole.
 - 19,700 lumen tear drop-style fixture.
 - 4,000K color temperature.
 - Black finish.




Pole options

Lighting is provided with the following pole options.

- A 14-foot pole option is available for pole-top mounted fixtures.
- A 30-foot pole option is available for pendant fixtures and includes a decorative arm.
- Each pole has a “twist-lock” 120 volt receptacle for adding plug-in style decorations.
- Poles are tapered, fluted aluminum tubes.
- Poles include decoration hooks and banner arms.
- Black powder-coated finish.

Decorative LED lighting monthly rate

As of September 30, 2021, the following rates apply per fixture.

Decorative lights	Tariff sheet	DLEDA7 Arlington	DLEDG7 Granville	DLEDE17 Esplanade
Minnesota	 11.07	\$87.77	\$86.11	\$110.56
North Dakota	 11.07	\$87.77	\$86.11	\$110.56
South Dakota	 11.07	\$87.77	\$86.11	\$111.27

DECORATIVE LIGHTING OPTIONS

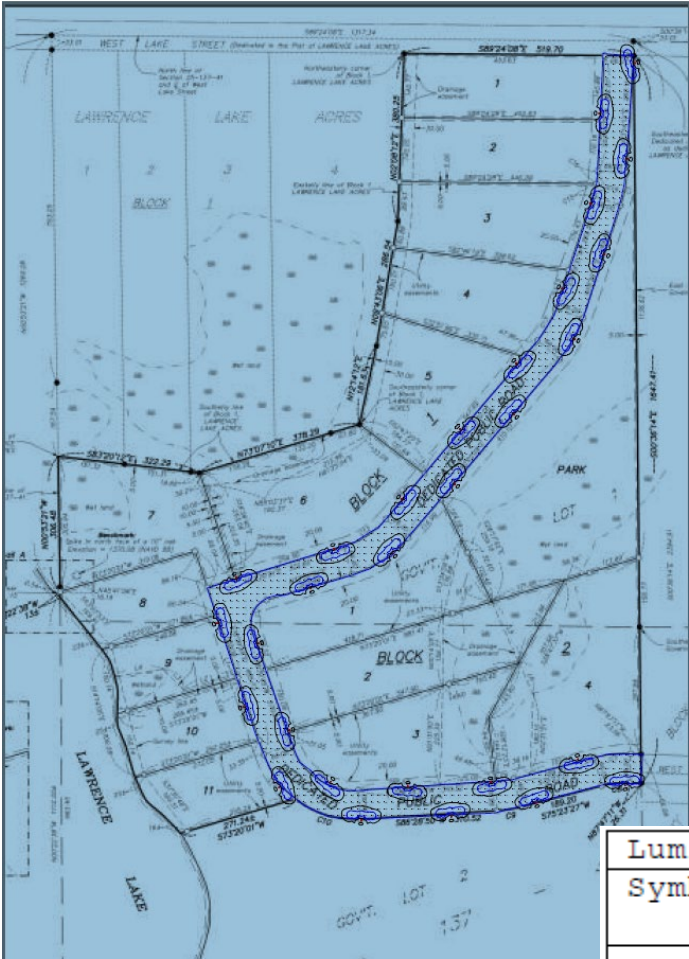
Maintain a safer environment for your community with professionally-designed lighting



Our decorative LED lighting program offers several benefits to city leaders, administrators, and business managers including:


- A fixed-fee format that simplifies annual budgeting.
- Little to no capital investment.
- Reduced or eliminated need for maintenance staff and equipment.
- An attractive and turn-key lighting system designed by a lighting-design professional.

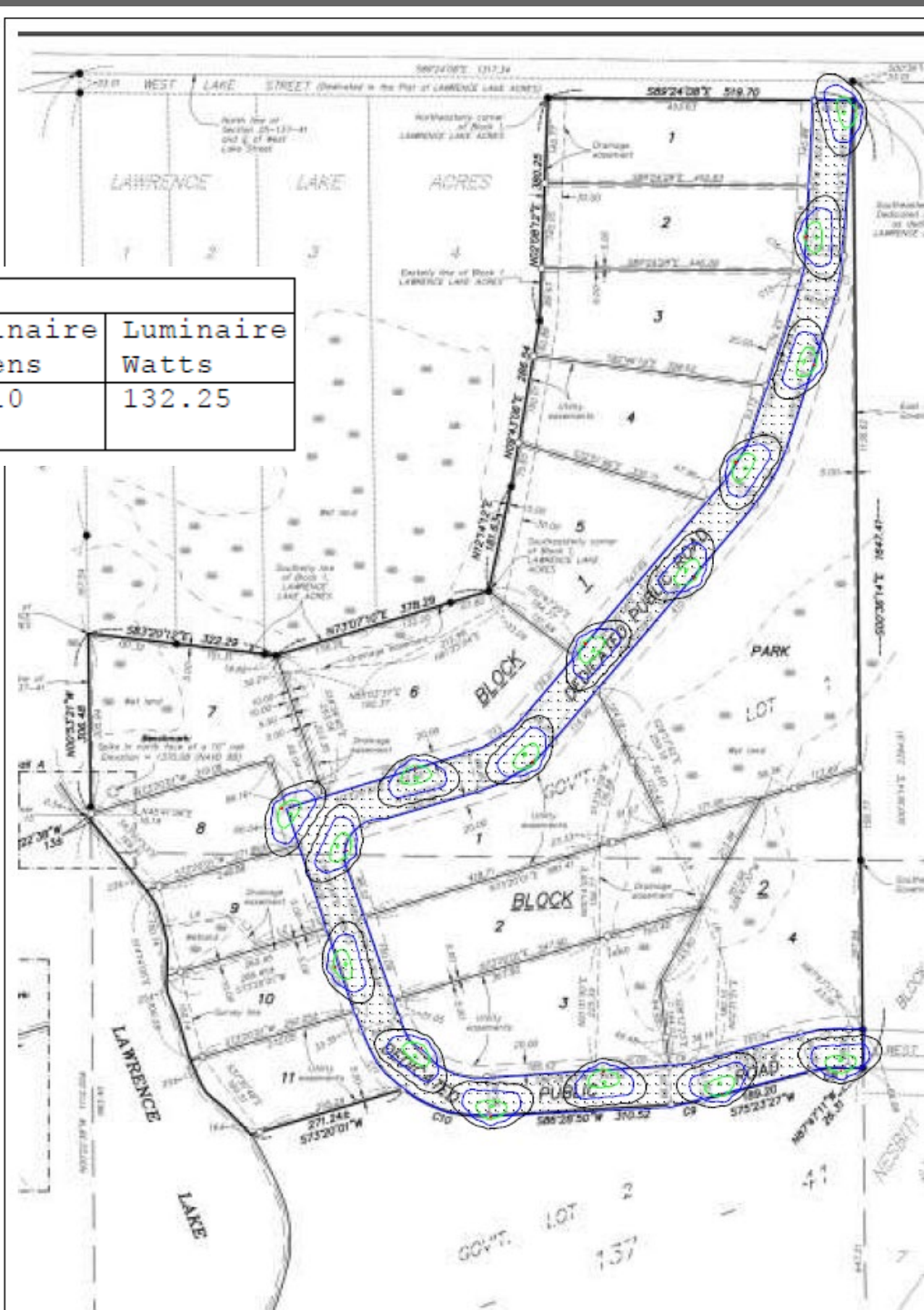
LED STREET AND AREA LIGHTING UPGRADE



Luminaire Schedule						
Symbol	Qty	Label	Mounting Height	Description	Luminaire Lumens	Luminaire Watts
●	29	GVD3 P30 40K XXXX GL3	14	GVD3 P30 40K XXXX GL3	8407	61


LED STREET AND AREA LIGHTING UPGRADE

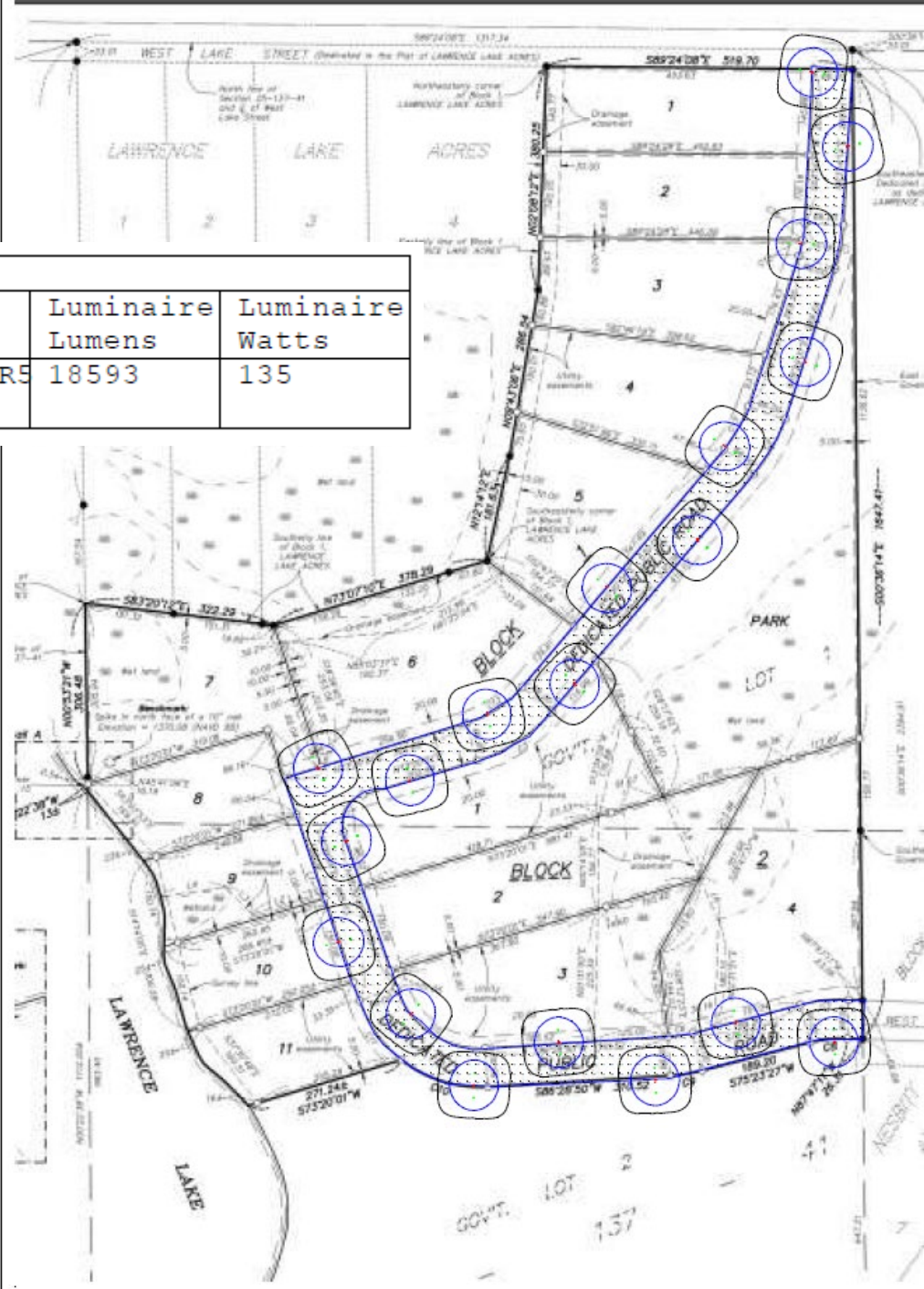
Luminaire Schedule						
Symbol	Qty	Label	Mounting Height	Description	Luminaire Lumens	Luminaire Watts
	16	ESL3 P40S 40K XXXXX TG3	30	ESL3 P40S 40K XXXXX TG3	20010	132.25



OUR COMMITMENT TO YOU

Luminaire Schedule

Symbol	Qty	Label	Mounting Height	Description	Luminaire Lumens	Luminaire Watts
	19	ATBM P40 XXXXX R5 4K_5K	30	ATBM P40 XXXXX R5 4K_5K	18593	135



COST COMPARISON PER MONTH

GRANVILLE OPTION			
Quantity	29		
Underground Span Length	5800		
LED Type	Monthly	Qty	Monthly
PLED13	\$ 21.40		\$ -
Arlington - 14' Pole	\$ 87.77		\$ -
Granville - 14' Pole	\$ 86.11	29	\$ 2,497.19
Esplanade - 30' Pole	\$ 110.56		\$ -
Pole Included	\$ -	29	\$ -
30' Pole	\$ 11.67		\$ -
Granville - 14' Pole	\$ 2,497.19		
Pole Included	\$ -		
Monthly Charge	\$ 2,497.19		

ESPLANADE OPTION			
Quantity	16		
Underground Span Length	3200		
LED Type	Monthly	Qty	Monthly
PLED13	\$ 21.40		\$ -
Arlington - 14' Pole	\$ 87.77		\$ -
Granville - 14' Pole	\$ 86.11		\$ -
Esplanade - 30' Pole	\$ 110.56	16	\$ 1,768.96
Pole Included	\$ -	16	\$ -
30' Pole	\$ 11.67		\$ -
Esplanade - 30' Pole	\$ 1,768.96		
Pole Included	\$ -		
Monthly Charge	\$ 1,768.96		

COBRA HEAD			
Quantity	19		
Underground Span Length	3800		
LED Type	Monthly	Qty	Monthly
PLED13	\$ 21.40	19	\$ 406.60
Arlington - 14' Pole	\$ 87.77		\$ -
Granville - 14' Pole	\$ 86.11		\$ -
Esplanade - 30' Pole	\$ 110.56		\$ -
Pole Included	\$ -		\$ -
30' Pole	\$ 11.67	19	\$ 221.73
PLED13	\$ 406.60		
30' Pole	\$ 221.73		
Monthly Charge	\$ 628.33		

SERVICES INCLUDED

UNDERGROUND SERVICE SUPPLIED BY THE COMPANY: If the Customer requests underground service to a new outdoor lighting unit for which overhead service is otherwise available, the Company will supply up to 200 feet of wire and add an additional \$2.52 to the monthly rate specified above. This applies to the following lights: LED5, LED8, LED10, LED20-Flood, and LED30-Flood.

If overhead service is not available, there is no additional charge for new underground service, up to 200 feet. This applies to the following lights: LED5PT, LED3PT, DLEDA7, DLEDG7, DLEDE17, or fixtures mounted on Aluminum Alloy Standards.

For any new installation requiring an underground conductor extended over 200 feet per fixture, the customer will be charged a monthly rate of \$0.11 per foot. If there are multiple fixtures installed, any additionally installed length of conductor shall be combined in one monthly charge.

EQUIPMENT AND OVERHEAD SERVICE SUPPLIED BY THE COMPANY: The light shall be mounted on a suitable new or existing Company-owned pole. Any extension beyond an average installation length of 150 feet of wire will be at the expense of the Customer.

The Company will install, own and operate, and have discretion to replace or upgrade an LED light including suitable reflector or a flood light including a lamp, or a bracket for mounting on wood poles with overhead wiring and photo-electric or other device to control operating hours. Customers provided with pole top fixtures on fiberglass poles and fixtures mounted on Aluminum Alloy Standards will not receive overhead power supply. The light shall operate from dusk to dawn. The Company will supply the necessary electricity and maintenance for the unit.

SERVICE CONDITIONS: Lighting will not be mounted on Customer-owned property. The light shall be mounted upon a suitable new or existing Company-owned facility. The Company shall own, operate, and maintain the lighting unit including the pole, fixture, lamp, photoelectric control, mounting brackets, fixture arrester, LED driver and all necessary wiring using the Company's standard street lighting equipment as described herein. The Company shall furnish all electric Energy required for operation of the unit.

In cases of vandalism or damages, the Company has the discretion to discontinue service and remove Company equipment.