

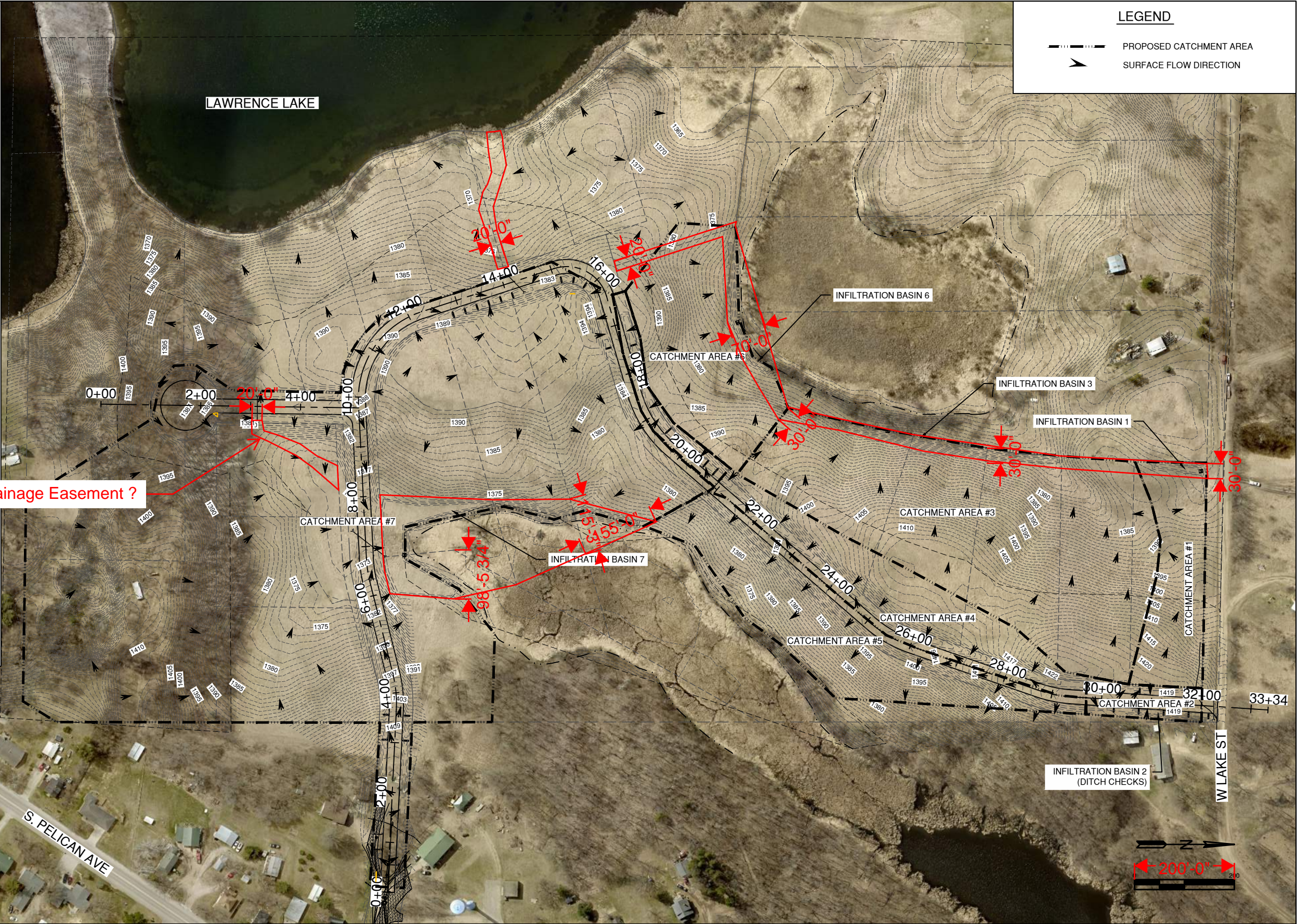
NOTES:

- CATCHMENT AREA #1:**
GREEN/TURF AREA: 0.97 ACRES
IMPERVIOUS AREA (ROOFS, DRIVES): 0.21 ACRES
TOTAL AREA: 1.18 ACRES
- CATCHMENT AREA 1 GENERALLY FLOWS OVERLAND TO PROPOSED INFILTRATION BASIN #1 WHICH THEN OVERFLOWS TO THE EXISTING DITCH ON WEST LAKE STREET.
- CATCHMENT AREA #2:**
GREEN/TURF AREA: 0.21 ACRES
IMPERVIOUS AREA (ROOFS, DRIVES): 0.15 ACRES
TOTAL AREA: 0.36 ACRES
- CATCHMENT AREA 2 DRAINS TO THE NEW DITCH WITH DITCH CHECKS PROVIDING TREATMENT. (SEE DETAIL)
- CATCHMENT AREA #3:**
GREEN/TURF AREA: 4.45 ACRES
IMPERVIOUS AREA (ROOFS, DRIVES): 1.17 ACRES
TOTAL AREA: 5.62 ACRES
- CATCHMENT AREA 3 FLOWS OVERLAND INTO PROPOSED INFILTRATION BASIN #3 PRIOR TO DISCHARGE TO AN EXISTING WETLAND THAT IS CONNECTED TO LAWRENCE LAKE.
- CATCHMENT AREA #4:**
GREEN/TURF AREA: 1.33 ACRES
IMPERVIOUS AREA (ROOFS, DRIVES): 0.49 ACRES
TOTAL AREA: 1.82 ACRES
- CATCHMENT AREA 4 IS COLLECTED VIA DITCH AND ROUTED TO INFILTRATION BASIN #7 FOR TREATMENT PRIOR TO DISCHARGE TO EXISTING WETLAND.
- CATCHMENT AREA #5:**
GREEN/TURF AREA: 2.15 ACRES
IMPERVIOUS AREA (ROOFS, DRIVES): 0.28 ACRES
TOTAL AREA: 2.43 ACRES
- CATCHMENT AREA 5 ROAD IMPERVIOUS SURFACE IS TO BE TREATED BY FILTRATION PRIOR TO DISCHARGE TO NEIGHBORING PROPERTY AND EXISTING WETLAND. IF THIS AREA IS DEVELOPED, ADDITIONAL TREATMENT WILL BE REQUIRED.
- CATCHMENT AREA #6:**
GREEN/TURF AREA: 1.91 ACRES
IMPERVIOUS AREA (ROOFS, DRIVES): 0.27 ACRES
TOTAL AREA: 2.18 ACRES
- CATCHMENT AREA 5 FLOWS OVERLAND TO THE PROPOSED INFILTRATION BASIN #6 FOR TREATMENT PRIOR TO DISCHARGE WETLAND THAT IS CONNECTED TO LAWRENCE LAKE.
- CATCHMENT AREA #7:**
GREEN/TURF AREA: 14.60 ACRES
IMPERVIOUS AREA (ROOFS, DRIVES): 3.48 ACRES
TOTAL AREA: 18.08 ACRES
- CATCHMENT AREA 5 FLOWS OVERLAND TO THE PROPOSED INFILTRATION BASIN #7 FOR TREATMENT PRIOR TO DISCHARGE TO THE EXISTING WETLAND.

Drainage Easement ?

LEGEND

- PROPOSED CATCHMENT AREA
➔ SURFACE FLOW DIRECTION



REVISIONS

Issue #	Description	Date



Bismarck - Detroit Lakes
Dickinson - Fargo - St. Cloud
920 McKinley Ave
Detroit Lakes, Minnesota 56501
Office: 218-844-2580
www.apexenggroup.com

Apex Project #: 22.556.0183
Date: FEBRUARY 10, 2023
Drawn By: JAJ, TAM
Checked By: JAB
Approved By: JSO

I hereby certify that this plan, specification or report was prepared by me or under my direct supervision and that I am a duly Licensed Professional Engineer under the laws of the State of Minnesota.
Print Name: Jonathan S. Olson
Signed:
Date: 2/10/23 License Number: 47561

LAWRENCE LAKE ACRES

SWPPP
PROPOSED DRAINAGE
CONDITIONS

Sheet:

8

OF 35